



SEND Capacity and Place Planning Strategy

Contents

Section 1	Overview: the need for additional specialist provision	3
Section 2	Recent Capital Projects to increase SEND provision in Northumberland	9
Section 3	Methodology for developing capital projects to meet future growth.....	11
Section 4	School Partnerships - Current provision and SEND forecasts.....	14
Section 5	Ideas/models to increase Specialist School Capacity	45
Section 6	Proposed Timescales for Implementation.....	49





Section 1

Overview: the need for additional specialist provision

In Northumberland, the number of children and young people who have been diagnosed as requiring an Education and Healthcare Plan has been increasing steadily, with significant additional capacity in the county's 9 special schools being required year on year in each of the past 10 years, as demonstrated in the graph below.

Number of Children and Young People with an EHC Plan in Northumberland Special Schools

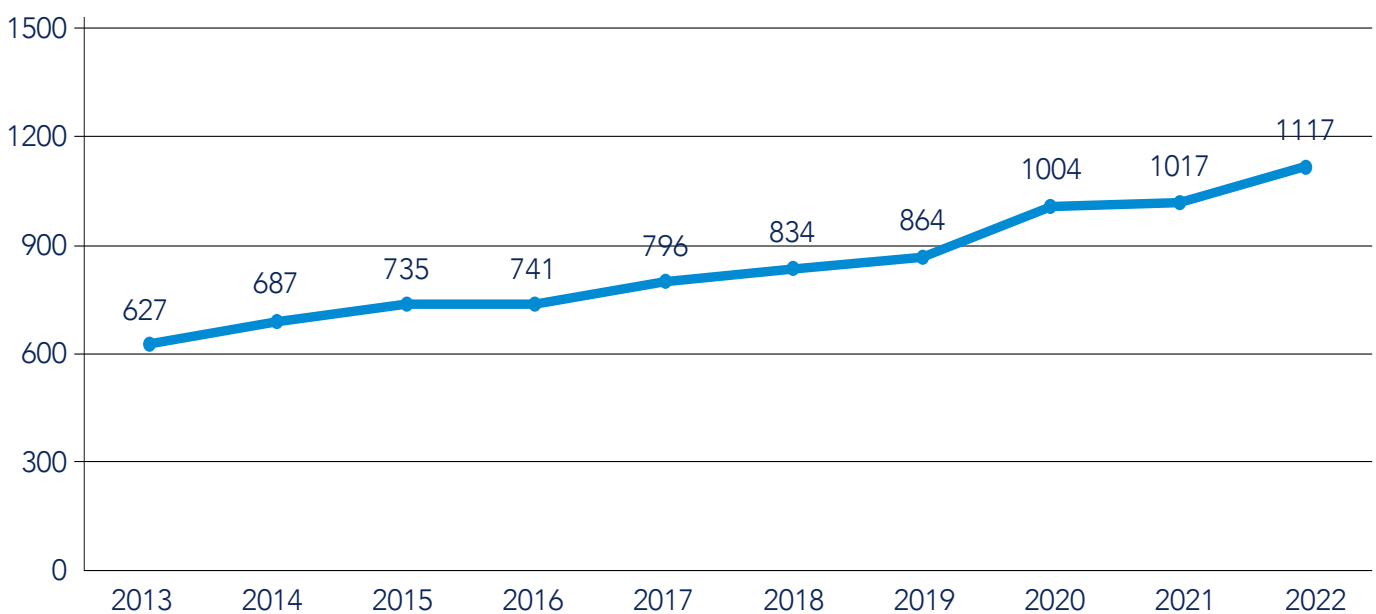


Table 1 – Number of pupils on roll in Northumberland Special Schools/Units 2013-2022

This steady upward trend in demand for special school places equates to an average increase over this period to date of 7% each year (actual variation from year to year has been between 1% and 16%). Overall, there are 78% more children and young people with an EHCP in Northumberland in 2022 than there were in 2013. Contributing to this is the continuing increasing demand from parents for their children to be educated within special school provision both in and out of the county.

The steady upward trend is also seen in the number of SEND commissioned places in the independent sector which has also seen an increase of 93 places since 2017 with the largest increases at 3 Northumberland based providers Buzz learning, GUST and Nunnykirk (see Table 2). There is however a down trend for commissioned places at Percy Hedley which has seen a reduction of 10 places since 2017.

Table 2 – Independent and non-maintained SEND settings showing number of Northumberland resident students on roll

School	2017	2018	2019	2020	2021	2022
Appletree School	1	2	2	2	1	0
Azure Charitable Enterprises	0	2	3	2	2	2
Buzz School and College	0	6	20	22	25	43
Dilston College	12	6	1	1	1	0
GUST	13	28	28	26	28	29
Howard House	1	1	0	3	5	3
High Peak	0	1	1	1	1	1
ID Academy	0	0	0	3	3	5
Kirby Moor School	6	4	6	8	9	11
Nisai Virtual Academy Ltd	1	1	2	5	3	3
North East Autism Society - Thornhill Park	1	3	2	2	2	2
North East Centre for Autism - Aycliffe	2	2	1	1	1	1
Northern Counties School	18	25	23	22	21	20
Nunnykirk School	10	27	45	41	46	35
Parkside House School	11	11	17	19	14	15
Peartree Project	1	1	1	1	4	4
Percy Hedley College	5	3	7	9	6	7
Percy Hedley School	27	21	23	20	17	13
Priory Fieldfare	0	0	0	1	1	0
Rosewood Independant School	0	0	0	0	13	18
Spark of Genius - Caledonian School	0	0	0	0	1	1
Spark of Genius - Harbour Point School	2	2	3	2	3	0
Talbot House School Newcastle	10	6	15	11	7	5
TOTAL	121	152	200	202	214	218

Note - Nunnykirk School closed on 31 August 2022

Table 3 highlights the increasing numbers of pupils with SEND that attend special schools in Northumberland.

Table 3 – Number of students attending Northumberland Special Schools by year since 2013

School	Special School Numbers									
	2013	2014	2015	2016	2017	2018	2019	2020	2021	2022
Atkinson House	59	50	54	58	64	71	78	72	75	75
Barndale House	35	37	40	36	38	40	37	46	48	59
Cleaswell Hill	125	148	154	161	173	175	181	187	188	194
Collingwood School and Media Arts College	104	127	142	136	136	145	144	197	201	232
Cramlington Hillcrest	45	56	58	61	72	81	88	99	100	109
Hexham Priory	60	65	76	77	88	96	99	113	113	120
NCEA Castle							102	99	99	111
NCEA Unit	98	98	98	98	98	98				
The Dales	68	72	77	76	88	89	98			
The Dales (including Ashdale)								144	148	169
The Grove	33	34	36	38	39	39	37	47	45	48
Grand Total	627	687	735	741	796	834	864	1004	1017	1117

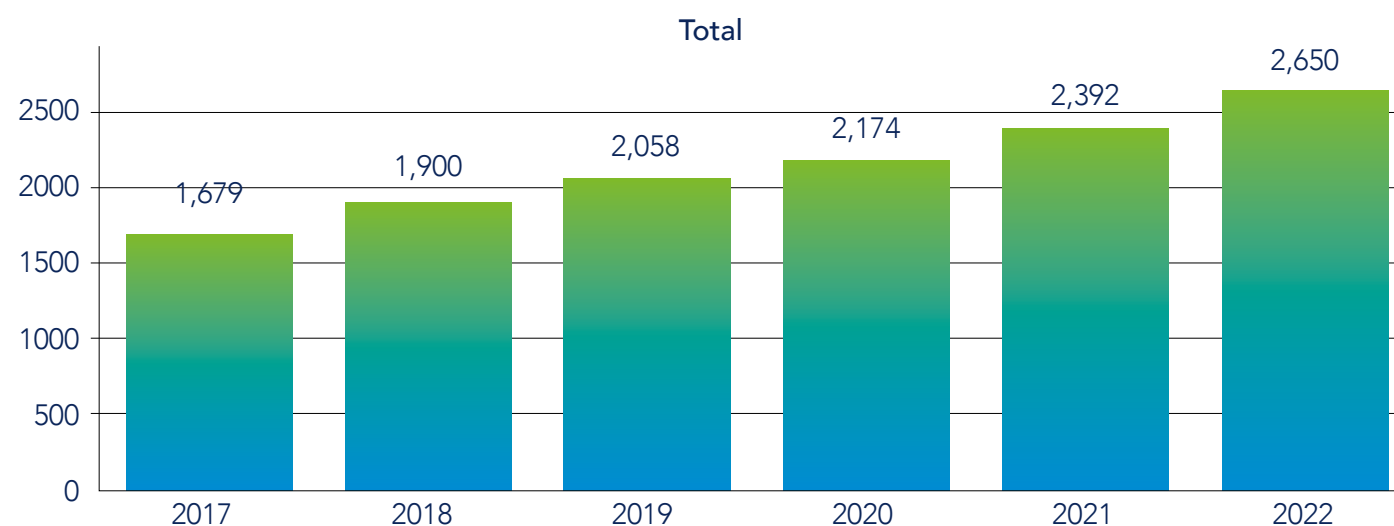
It is also widely acknowledged nationally that there are significant financial pressures on mainstream schools in supporting SEND provision, not least due to school budget pressures and expectations on schools to fund the first £6k of support for each SEND learner with an EHCP.

In particular, there has been a significant increase in the number of children and young people who have been identified with a primary special need of autism (ASD) and/or social emotional and mental

health (SEMH) needs. Northumberland has been successful in bidding for a special free school, the Gilbert Ward Academy, for secondary age young people who have autism and social, emotional and mental health needs which is planned to open in September 2023.

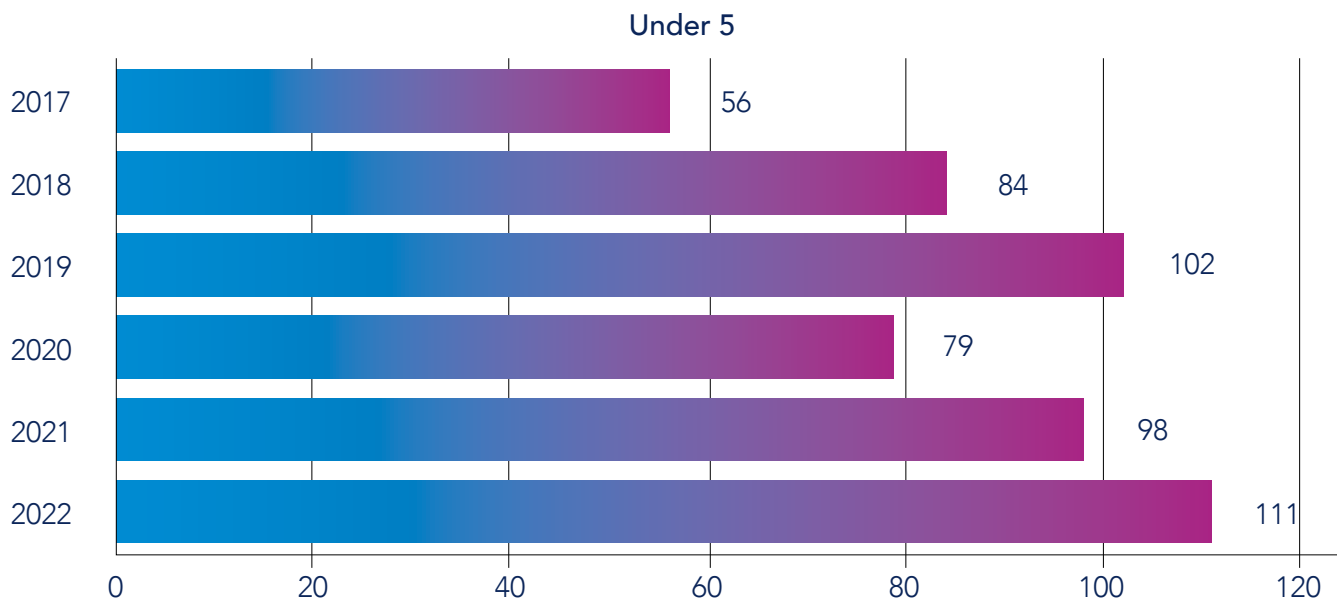
Looking at more recent data, as at the January 2022 SEN Census, 2,650 children and young people had EHCP plans; this is an increase of 58% since 2017.

Table 4 – All students resident in Northumberland with an EHCP



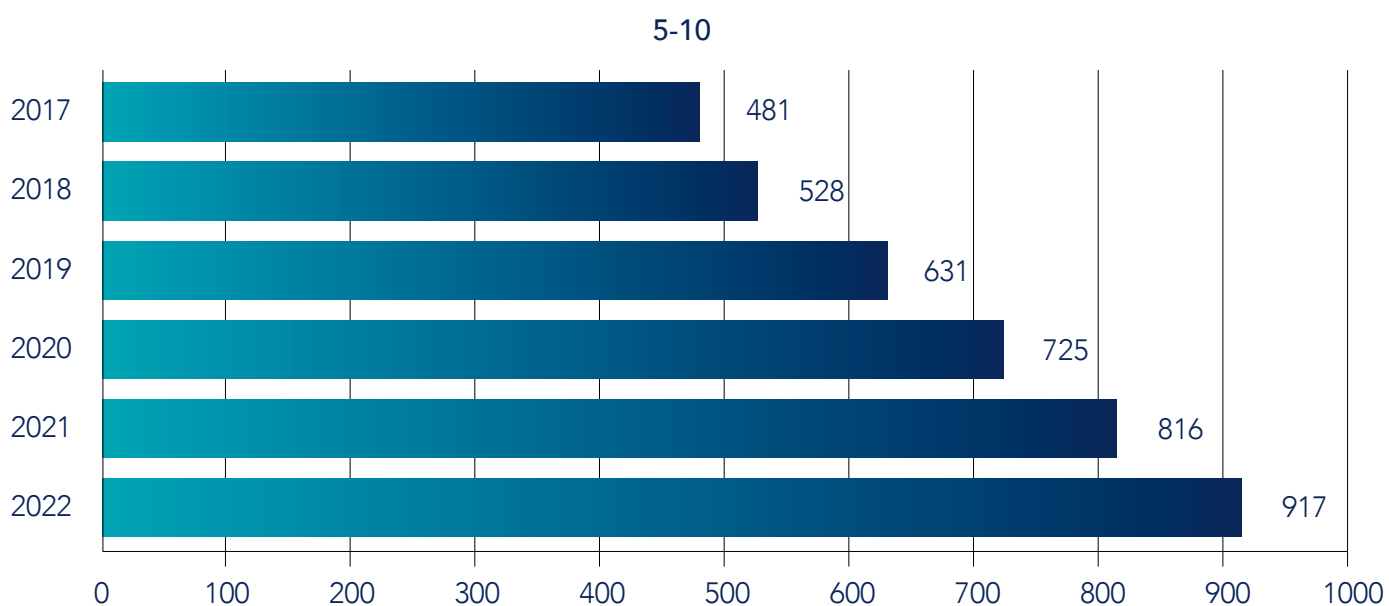
In Northumberland in 2022, 4% of children with an EHCP are under the age of five and shows an overall growing trend (albeit with a slight drop in 2020).

Table 5 – Students aged under 5 resident in Northumberland with an EHCP



Children in the 5-10 age group have shown a steady increase since 2017 and they represent 35% of the current cohort of children and young people with an EHCP in the county.

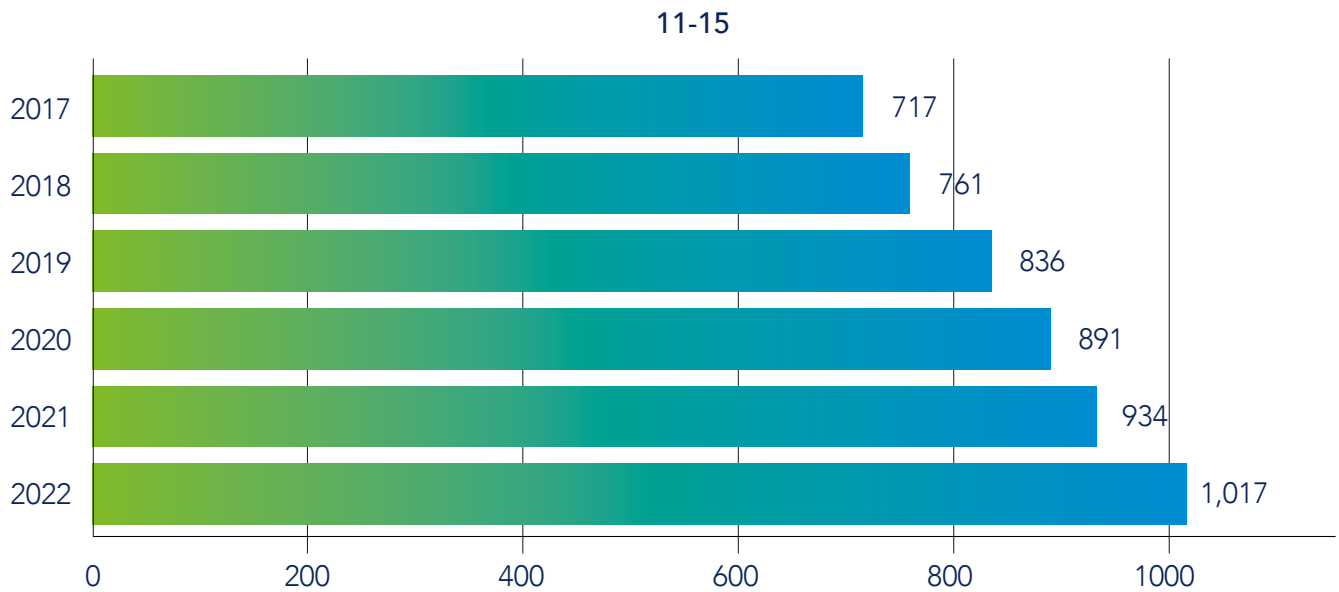
Table 6 – Students aged 5-10 resident in Northumberland with an EHCP



The 11-15 age bracket account for the largest number of children and young people with 38% of the current cohort having EHCP as at January 2022. This represents a 9% increase in this age group on the previous year, compared with a 10% rise nationally¹.

¹ Source education-statistics.service.gov.uk

Table 7 – Students aged 11-15 resident in Northumberland with an EHCP

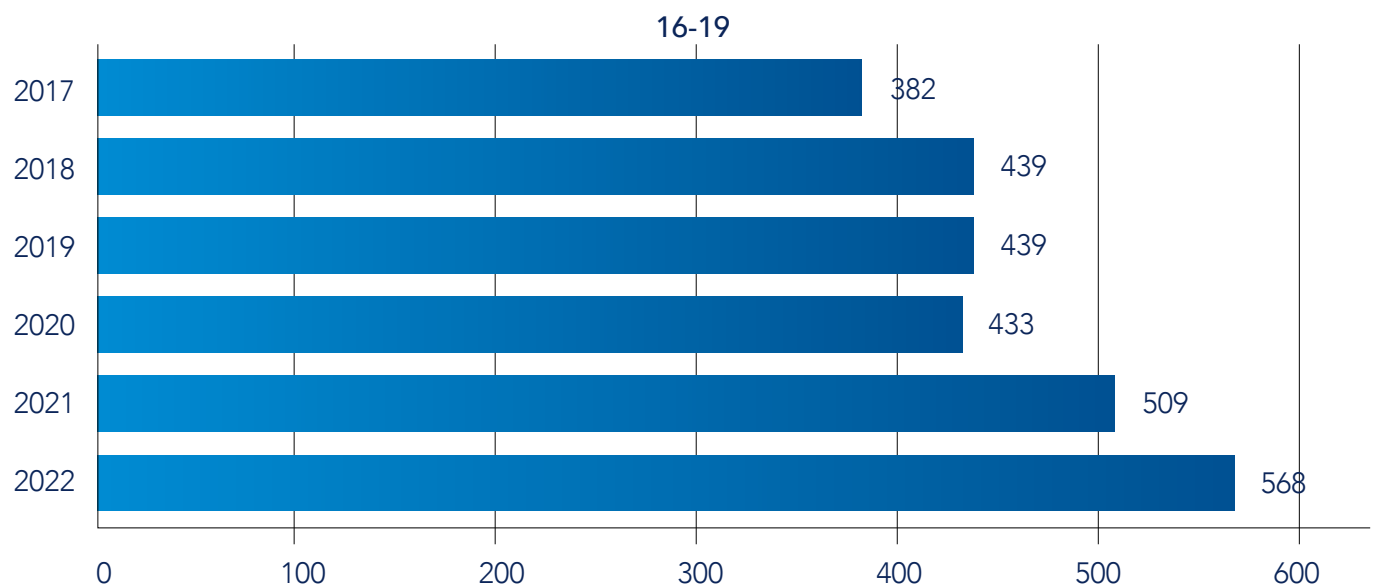


Specifically in relation to the age 5-10 group and the age 11-15 group, some of the increase in allocation of EHCPs is due to the fact that the Council no longer has top up funding (provision of funded support in school without an EHC needs assessment or EHCP), as this has been replaced with STAR (Short Term Additional Response) funding, which is time limited. Those with top up funding are being reviewed, where the decision will be made whether to cease funding or apply for an EHCP. Another factor is the

increase in demand from schools for additional funding, driven by pressures on school budgets. However, whilst there are far fewer children in mainstream schools with EHCPs in the primary phase than in the secondary phase, the gap appears to be closing.

While the number of EHCPs allocated to students aged 16-19 had been relatively stable up to 2020, the number is increasing again, with 21% of the current cohort in this age group.

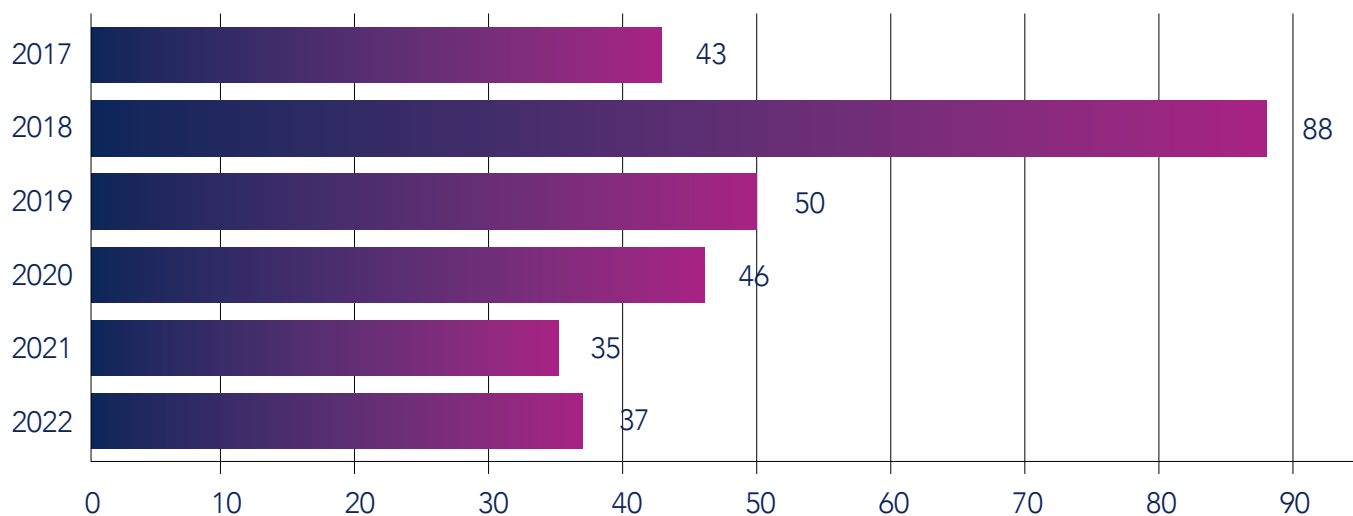
Table 8 - Students aged 16-19 resident in Northumberland with an EHCP



After having bucked the national trend up to 2021 with a fall in the number of young people with an EHCP in the age 20-25 group, there has been a slight increase in this cohort in 2022 representing 1.4% of the total cohort.

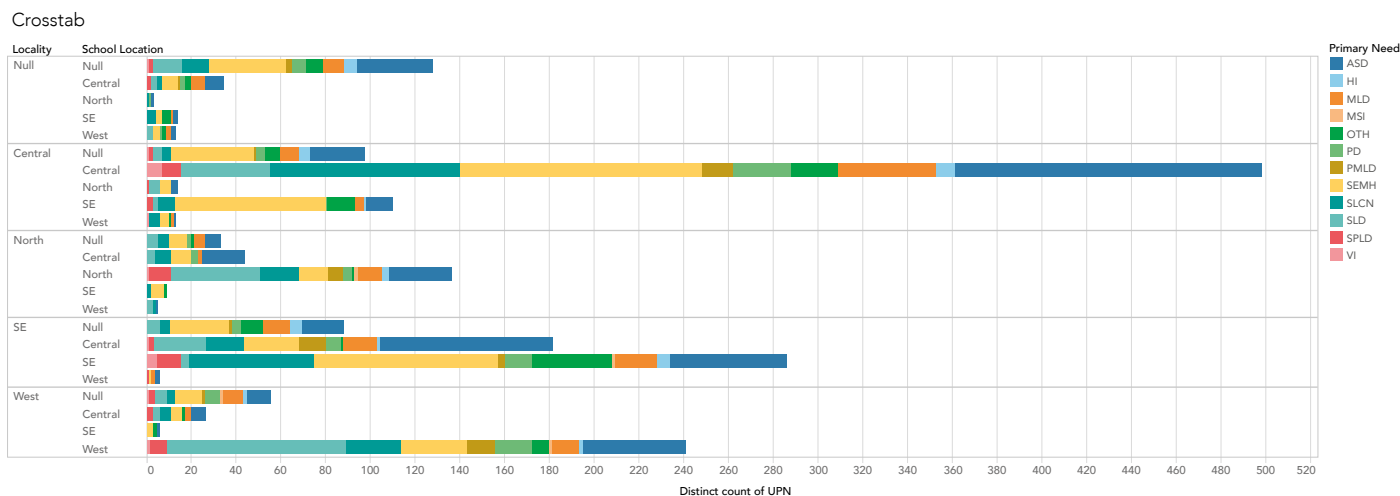
Table 9 - Students aged 20-25 resident in Northumberland with an EHCP

20-25



A particular issue within the context of the size of Northumberland and the location of specialist provision, are the distances that many children with SEND have to travel to attend suitable provision. Table 10 shows where children on roll in a special school in Northumberland live compared to where they have to travel for their education (see following graph):

Table 10 – SEND student residential area compared to school location



The graph above shows in which area of the County (North, Central, South East and West) children with an EHCP on roll in mainstream and Special Schools reside compared to where they travel to receive their education. For example, the majority of children resident in the Central sector of the County with an EHCP receive their education in the Central and South East areas, therefore have the shortest journeys to school. Relative to the total number of

children with EHCPs living in the west of the county, more have further to travel either to other areas of the county or out of county. The proportion of children denoted with 'null' in the above graph shows those children living in the various parts of the county who are educated out of county.

Section 2

Recent Capital Projects to Increase SEND Provision

In late 2017, the Council consulted on its Vision and Strategy for children and young people with SEND for 2017 to 2020 which formed the basis of the Northumberland SEND strategy at that time. Following the 2017/18 consultation the council committed to develop models and focus the council's resources it was proposed to consult based on the areas of greatest need.

The priority area for expansion was identified as the south-east and central areas of the county. These areas have seen the greatest increase in demand for places in our special schools. In order to meet this increased demand, it was proposed to consult on growing capacity at Cleaswell Hill Special School in Guidepost, Collingwood Special School in Morpeth, Hillcrest Special School in Cramlington and The Dales Special School in Blyth. No projects to increase capacity were taken forward at that time, and no further consultation was undertaken following the publication of the report in April 2018. Currently, there is some work being undertaken to provide some growth capacity for Cleaswell Hill through use of the Sycamore Centre.



Capital works to create pilot Additionally Resourced Provisions (ARPs) at Astley High and Seaton Sluice First Schools have been completed with the first school ARP becoming operational in April 2021 and the secondary ARP opening in September 2021. The findings from the 2017/18 consultation found there was clear support from parents and carers to grow specialist units on mainstream school sites, particularly those in the west and the north where there is the least concentration of pupils. There was however very limited feedback from the schools themselves on these options. The proposal at the time was to hold discussions with all Northumberland Schools and Academies in order to co-produce a plan for consultation on growing capacity in mainstream schools.

Although the implementation of the SEND strategy was delayed due to the COVID pandemic, the opportunity to revisit the strategy has been taken and the "Northumberland Local Area Strategy for Children, Young People and their families with Special Educational Needs and/or Disabilities 2021-2024" was developed and published in June 2021.

One of the key principles of the new SEND Strategy is:

- ***Developing high quality inclusive provision with every child/young person having access to a good school that is as close to home as possible;***

This principle neatly dovetails with the purpose of this SEND Capacity and Place Planning Strategy, the key focus of which is to grow specialist provision

within Northumberland to ensure children with SEND are educated as close to home as possible in high quality education establishments.

Although the earlier SEND strategy was not fully realised, since 2017 capital works have been carried out to increase SEND capacity in Northumberland and include the following schemes:

- A capital scheme was undertaken to provide 50 special education places at Ashdale, a satellite site of The Dales School, Blyth; this high-quality unit was developed in a former sixth form provision and was nominated for an industry recognised building award.
- A capital scheme has provided 32 places at Hexham Priory Academy School through expansion on the current site, creating a further 32 places for local children.
- A capital scheme has provided an additional 10 places at Hillcrest Special School.
- A capital scheme was undertaken to refurbish a former Children's Centre on the Collingwood site to create specialist Sixth Form accommodation thereby allowing an increase in capacity of 12 to 16 pupils.
- A capital scheme to provide an Additionally Resourced Provision (ARP) was completed at Astley High School in early 2021, with specialist provision now on site for up to ten students with ASD and those with emotional vulnerability needs.
- A capital scheme to provide an ARP at Seaton Sluice First School was completed with provision for up to 12 pupils aged 4-9 with a broad range of needs, including ASD, Communication and Interaction, and Moderate Learning Difficulties.
- The new ARPs are assisting with higher number of students with SEND on roll in mainstream schools in the Seaton Valley Partnership and neighbouring partnerships.
- The Council submitted a successful bid to the DfE for the establishment of a free special school in Blyth that will provide 80 places for children with social and emotional mental health issues (SEMH) and autistic spectrum disorder (ASD) and this has been successful. The initial proposal is that 50 of these places would be allocated to children resident in Northumberland, with ten places each allocated to children resident in the North Tyneside, Gateshead and Newcastle council areas. A suitable site has been identified and a successful sponsor has been appointed and is now working on the plan for the school. The new school is planned to open in 2023.

The Role of the Pupil Referral Unit (PRU)

Northumberland's Pupil Referral Unit is a short stay school for pupils experiencing social, emotional and mental health difficulties that result in exclusions and suspensions from their mainstream setting. The goal is to provide support and intervention in a smaller setting with specialist staff to enable learners to successfully reintegrate back into school.

There are 3 referral pathways into the PRU;

- schools can refer directly for pupils requiring a shared 'dually registered' placement, this is time specific and should result in the young person going back to their home school.
- the Council can refer permanently excluded pupils with a view to identifying and supporting any un-met needs to ensure they have a pathway back into a permanent educational setting.
- Referral via the Council's Fair Access Panel; complex or hard to place learners moving into the County, might be allocated a place in the PRU if it is thought to be the most appropriate setting to assess their needs before identifying a school.

Plans are being developed to change the age range of the PRU to become an age 11 to 16 (Key Stage 3 and Key Stage 4) provision from September 2022, with numbers expected to increase throughout the academic year. The PRU will be commissioned for 40 places in September 2022, with a reasonable possibility of growth to 60 places into 2023/24 as demand arises.

At the same time as the change of age range, it is also proposed to relocate the PRU to more suitable premises, as the current facilities at Hepscott Park PRU would not be suitable for older students. It is therefore proposed that the PRU will move to the former building of Emily Wilding Davison School in Seghill, in October 2022 or as close to that date as practically possible.

Section 3

Methodology for developing capital projects to meet future growth

The methodology used to identify the need for additional SEND capacity across Northumberland is proposed to be a 3-step approach:

- A. Annual SEND Forecasting at county and partnership levels, developed from the current mainstream pupil forecasting process:
- B. Annual SENCo survey for data on current cohorts in first, primary and middle schools:
- C. Partnership workshops to review local data and discuss potential solutions.

Annual SEND Forecasting

The process used for mainstream pupil forecasting, which uses past pupil numbers and planned housebuilding to predict future pupil numbers, has been adapted for use with SEND data. The current Northumberland level forecasts by year group for pupils with ASD as a primary need and pupils with SEMH as a primary need at the county level are set out in Tables 11 and 12, which are based on the number of students currently on roll in special schools in the county.

As this is a new method of forecasting SEND data for Northumberland, these forecasts are limited to current data and do not include the potential impact of future interventions or strategies. As such, they are limited to a five-year forecast and are used as guidance on potential future numbers until the body of data becomes more robust. With that caveat in mind, the forecasts at Table 11 and 12 suggest that the numbers of students being allocated an EHCP with respect to a primary need in ASD or SEMH will continue to rise significantly year on year for the 5-year forecast period.

Table 11 - All Northumberland - ASD Five year forecast

NORTHUMBERLAND															
Final Forecasts															
Year Group	R	1	2	3	4	5	6	7	8	9	10	11	12	13	NOR Totals
2022	38	46	60	71	65	78	66	86	94	90	85	66	53	41	940
2023	34	51	60	82	86	82	90	73	105	109	100	89	54	52	1067
2024	34	46	67	83	100	108	95	99	89	121	119	104	74	53	1193
2025	34	45	60	92	100	127	125	104	120	102	133	125	87	72	1327
2026	35	45	60	83	112	127	146	138	127	138	112	140	105	84	1451

Table 12 - All Northumberland - SEMH Five year forecast

NORTHUMBERLAND															
Final Forecasts															
Year Group	R	1	2	3	4	5	6	7	8	9	10	11	12	13	NOR Totals
2022	44	72	102	109	119	161	189	182	172	153	128	125	75	60	1693
2023	41	74	103	119	130	135	177	196	187	171	145	113	71	58	1720
2024	41	69	106	120	141	148	149	183	201	186	162	128	64	55	1753
2025	41	69	99	124	143	161	162	154	187	200	176	143	72	49	1781
2026	41	69	99	116	148	162	177	168	158	186	189	155	81	56	1806

SEND forecasts at the partnership level have now been developed to provide key data on SEMH and ASD growth so that capital projects can be developed to increase capacity to meet the right SEND needs in the right places in the county. Individual SEND partnership forecasts will also be produced annually and these will provide the key element of forecast data to assist with specific SEND capacity planning by area ([See Section 4](#)).

Annual SENCo Survey

As part of the 3-step approach to providing a triangulated assessment of SEN needs in the county, an initial survey of SENCOs working in mainstream schools and academies in Northumberland took place in Autumn 2021 in order to gain the view of those working at the 'coal-face' with regard to the potential for future places in specialist provision and special schools. The 10 survey questions asked for a mixture of factual data and subjective responses from the SENCOs based on their professional opinions as follows:

1. How many children in your Reception class have an EHCP?
2. How many children in your Reception class with an EHCP do you think will need a place in a Special School at Year 7?
3. How many children in Year 4 in your school have an EHCP?
4. How many children in Year 4 with an EHCP do you think will need a place in a Special School at Year 7?
5. How many children in Year 5 in your school have an EHCP?
6. How many children in Year 5 with an EHCP do you think will need a place in a Special School at Year 7?
7. How many children in Year 5 at your school currently are the subject of a COSA (Consideration of Statutory Assessment)?
8. How many children in Year 6 in your school have an EHCP?
9. How many children in Year 6 with an EHCP do you think will need a place in a Special School at Year 7?
10. How many children in Year 6 at your school currently are the subject of a COSA (Consideration of Statutory Assessment)?

This process will be repeated annually each Summer Term, beginning in 2022 ahead of the formation of transition plans for children and young people in the following Autumn term to manage their phase changes. While the data provided will assist with timely identification of capacity needs so that capital projects can be developed well-in advance of places being required in the following September, it will also assist with longer term capacity planning.

Table 13 provides an analysis of the data gathered from the SENCOs responses at the Northumberland level:

Table 13 – Feedback from SENCOs at Northumberland level

ALL Partnerships	
Children in reception with EHCP	48
Reception children needing a Y7 place in Special School	30
Children in Y4 with EHCP	73
Y4 children needing a Y7 place in Special School	37
Children in Y5 with EHCP	75
Y5 children needing a Y7 place in Special School	39
Y5 children COSA applications	61
Children in Y6 with EHCP	75
Y6 children needing a Y7 place in Special School	29
Y6 children COSA applications	45

The data provided in Table 13 indicates there is a significant jump in children with an EHCP in Reception classes when compared to the number of children with an EHCP in Years 4, 5 and 6, probably as a result of needs emerging as children progress through school. This is the first set of data provided by SENCOs, therefore this initial information will be assessed with caution – however, it provides a benchmark against which to compare future survey results that, together with the other 2 steps in this methodology, will assist in providing more robust forecasts of SEN numbers to assist with capacity planning. However, in this first iteration of the SEND Capacity and Place Planning Strategy, the initial data provided by SENCOs in Autumn 2021 at partnership level is provided for information with no conclusions being drawn at this stage.

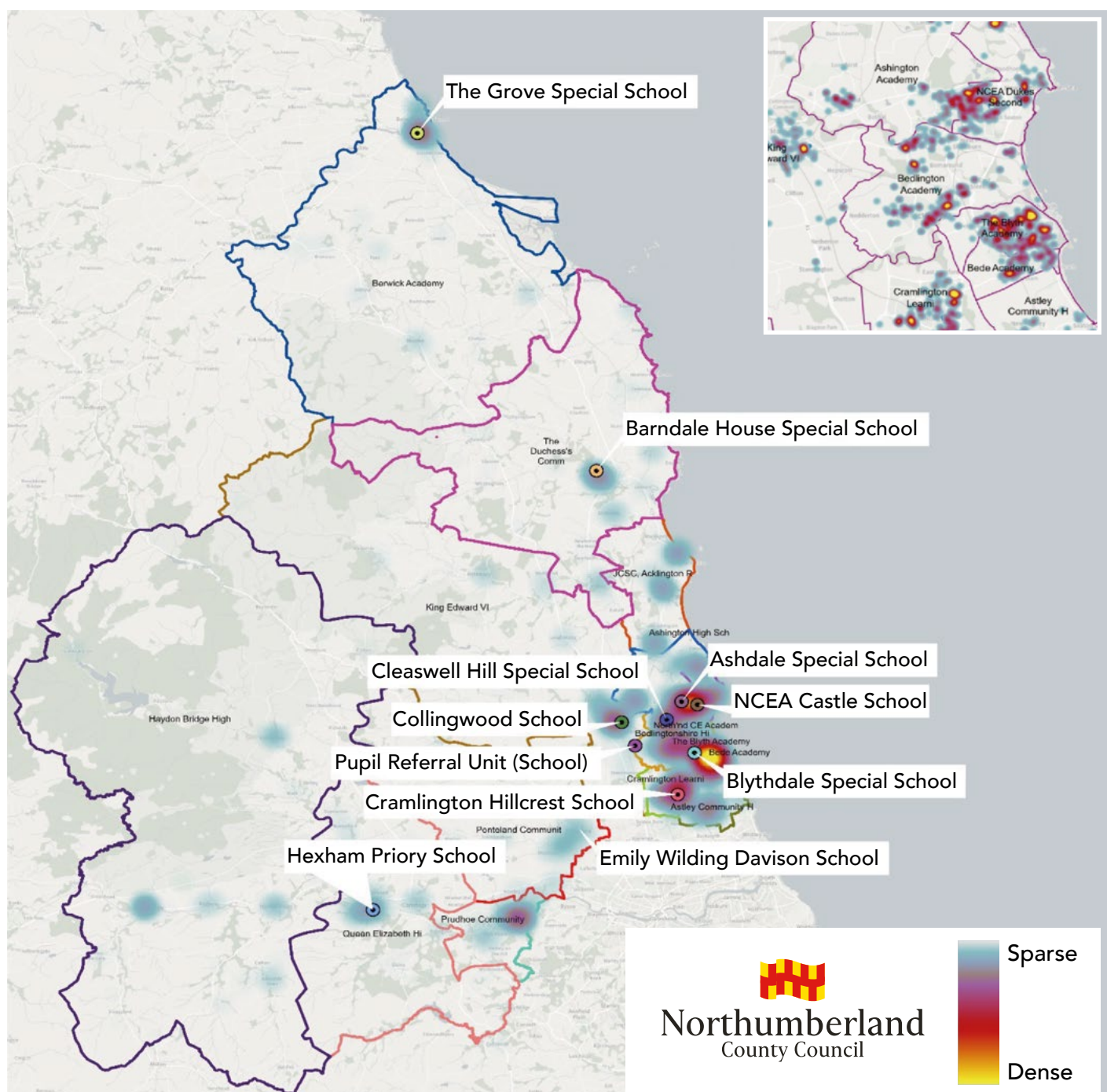


Section 4 School Partnership Data

Forecasts for ASD and SEMH at the partnership level are based on pupils residing in the relevant partnership who have an EHCP on roll in mainstream schools and special schools (which may be in or out of county).

The map below shows the locations of the maintained special schools in the county, and the school partnerships they are located within.

ALL Northumberland EHCP Students (Y0-Y11)



Key to primary needs abbreviations:

SpLD	Specific Learning Difficulty	MLD	Moderate Learning Difficulty
VI	Visual Impairment	MSI	Multi- sensory impairment
OTH	Other Difficulty/Disability,	SLD	Severe Learning Difficulty
HI	Hearing Impairment	PMLD	Profound and Multiple Learning Difficulty
SLCN	Speech, language and Communication	PD	Physical Disability
ASD	Autistic Spectrum Disorder		
SEMH	Social, Emotional and Mental Health		

Alnwick Partnership

Current provision within the partnership area

Provision	Age range	Needs met	Capacity	Number on Roll Jan 22 Census
Barndale Special School, Alnwick	2-19	AS; HI; MLD; PD; SEMH; SLCN; SLD; SPLD; OTH	60	59

SEN Forecasts

Table 14 – Alnwick Partnership: ASD Forecast September 2022-September 2026

ALNWICK PARTNERSHIP															
Final Forecasts															
Year Group	R	1	2	3	4	5	6	7	8	9	10	11	12	13	NOR Totals
2022	1	1	2	1	2	0	6	7	5	11	12	7	4	3	60
2023	1	1	1	1	1	3	0	7	9	8	14	13	4	5	66
2024	1	1	1	0	1	2	4	0	8	14	10	16	8	5	70
2025	1	1	1	0	0	1	2	5	0	13	18	11	10	10	73
2026	1	1	1	0	0	0	1	3	6	0	16	20	7	13	68

Table 15 – Alnwick Partnership: SEMH Forecast September 2022-September 2026

ALNWICK PARTNERSHIP															
Final Forecasts															
Year Group	R	1	2	3	4	5	6	7	8	9	10	11	12	13	NOR Totals
2022	5	4	1	8	10	9	17	8	11	12	5	11	5	3	111
2023	4	7	5	2	15	15	11	16	11	12	15	4	5	4	125
2024	4	5	9	6	3	21	18	10	20	11	15	13	2	4	142
2025	4	5	7	11	10	4	26	17	13	20	13	13	6	2	151
2026	4	5	7	9	19	15	5	24	22	13	26	12	5	5	170

Table 16 – Alnwick Partnership: Data and information received from SENCOs Autumn 2021

Alnwick Partnership	
Children in reception with EHCP	Under 5
Reception children needing a Y7 place in Special School	0
Children in Y4 with EHCP	5
Y4 children needing a Y7 place in Special School	Under 5
Children in Y5 with EHCP	6
Y5 children needing a Y7 place in Special School	Under 5
Y5 children COSA applications	Under 5
Children in Y6 with EHCP	Under 5
Y6 children needing a Y7 place in Special School	0
Y6 children COSA applications	Under 5

Commentary

Tables 14 and 15 suggest there will be a steady growth in the number of students diagnosed with ASD living in the Alnwick Partnership in the next 5-year period, but the significant growth forecasted appears to be in relation to students diagnosed with SEMH. Part of the solution to accommodate this growth could be the proposed Barndale satellite site in the Coquet Partnership ([see later](#)) currently under consultation, as this would be a fairly local solution in relation to the Alnwick area. However, this would not be sufficient to meet all of the capacity needs suggested by these forecasts. Additional provision will be required within the Alnwick area and therefore it is proposed that Barndale Special School would be expanded on its current site, or an alternative/new build would be identified ([See Section 5](#)).



Ashington and NCEA Partnerships

Current Provision

Together the Ashington Partnership and NCEA Partnership serve the areas in and around the towns and villages of Ashington, Pegswood, Linton, Ellington, Lynemouth and Newbiggin-by-the-sea.

Provision	Age range	Needs met	Capacity	Number on Roll Jan 22 Census
NCEA Castle School, Hirst, Ashington (academy)	2-19	ASD; MLD; MSI; PD; PMLD; SLCN; SLD; VI	109	111
Ashdale, Ashington (satellite of The Dales)	4-11	SpLD; VI; OTH; H; SLCN; ASD; SEMH; MLD; SLD; PMLD	50	50

SEN Forecasts

Table 17 – Ashington Partnership: ASD Forecast September 2022-September 2026

ASHINGTON PARTNERSHIP															
Final Forecasts															
Year Group	R	1	2	3	4	5	6	7	8	9	10	11	12	13	NOR Totals
2022	2	3	2	8	4	18	9	13	3	6	9	6	2	4	89
2023	2	2	3	3	10	6	20	10	14	3	8	16	4	2	103
2024	2	2	2	4	4	14	6	24	11	15	4	15	11	3	117
2025	2	2	2	3	6	6	16	7	25	12	19	8	10	8	125
2026	2	2	2	3	4	8	6	19	8	27	15	35	5	8	143

Table 18 – NCEA Partnership: ASD Forecast September 2022-September 2026

NCEA PARTNERSHIP															
Final Forecasts															
Year Group	R	1	2	3	4	5	6	7	8	9	10	11	12	13	NOR Totals
2022	3	3	6	6	7	9	26	18	9	12	7	9	12	3	130
2023	3	4	4	9	9	11	14	32	18	12	14	9	7	7	154
2024	3	6	5	6	12	13	16	18	34	24	15	17	6	4	179
2025	3	6	6	8	8	19	20	21	19	44	29	17	12	4	216
2026	3	6	6	10	11	13	28	26	22	24	53	34	13	8	256

Table 19 – Ashington Partnership: SEMH Forecast September 2022-September 2026

ASHINGTON PARTNERSHIP															
Final Forecasts															
Year Group	R	1	2	3	4	5	6	7	8	9	10	11	12	13	NOR Totals
2022	1	2	9	4	11	15	12	11	15	21	12	11	9	3	134
2023	2	2	3	10	6	14	15	14	10	20	20	10	8	5	139
2024	2	5	3	3	13	8	15	19	12	13	19	18	8	4	142
2025	2	5	6	3	4	18	8	18	16	17	13	18	13	4	145
2026	2	5	6	7	4	6	18	10	16	22	16	11	13	7	144

Table 20 – NCEA Partnership: SEMH Forecast September 2022-September 2026

NCEA PARTNERSHIP															
Final Forecasts															
Year Group	R	1	2	3	4	5	6	7	8	9	10	11	12	13	NOR Totals
2022	11	22	24	16	13	34	35	28	20	26	14	19	11	5	276
2023	8	42	33	29	20	19	45	42	32	25	23	12	8	7	347
2024	8	28	63	40	37	30	25	55	49	42	23	20	5	6	431
2025	8	28	42	76	51	55	40	31	64	63	38	20	9	4	527
2026	8	28	42	50	97	76	73	48	36	82	57	33	9	6	646

Table 21 – Ashington and NCEA Partnerships: Data and information received from SENCOs Autumn 2021

Ashington and NCEA Partnership	
Children in reception with EHCP	6
Reception children needing a Y7 place in Special School	5
Children in Y4 with EHCP	7
Y4 children needing a Y7 place in Special School	7
Children in Y5 with EHCP	6
Y5 children needing a Y7 place in Special School	6
Y5 children COSA applications	8
Children in Y6 with EHCP	Under 5
Y6 children needing a Y7 place in Special School	Under 5
Y6 children COSA applications	5



Commentary

Tables 17 and 18 suggest there will be a significant increase of young people with ASD as a primary need across the whole Ashington area. In relation to SEMH, the forecasts suggest a modest increase in SEMH in the Ashington Partnership, but a much more significant increase in the NCEA Partnership area beginning in the early primary years.

Solutions to address this growth will be discussed with the schools and academies in both partnerships as part of the roll-out of the '3-point' plan, but an initial point for discussion could be the expansion of NCEA Castle and Ashdale. Additional capacity may also be available via Buzz Learning, an independent special school in Ashington.

Furthermore, the proximity of the Ashington and NCEA Partnerships to Bedlington, Blyth, and Cramlington Partnerships via the A189 corridor means that a wider view of provision for the whole South East locality can be taken when identifying solutions. Given the identified need in this locality, all partnerships discussions will be programmed to take place early in the roll-out timetable.

Bedlington Partnership

Current Provision

Provision	Age range	Needs met	Capacity	Number on Roll Jan 22 Census
Cleaswell Hill, Guidepost, Bedlington	2-19	SpLD; VI; OTH; HI; SLCN; ASD; SEMH; MSI; PD; MLD; SLD; PMLD	187	194

SEN Forecasts

Table 22 – Bedlington Partnership: ASD Forecast September 2022-September 2026

BEDLINGTON PARTNERSHIP															
Final Forecasts															
Year Group	R	1	2	3	4	5	6	7	8	9	10	11	12	13	NOR Totals
2022	9	12	8	8	8	7	9	18	20	22	9	4	3	5	142
2023	8	27	16	11	11	9	9	11	27	29	24	8	3	3	196
2024	8	23	36	23	15	12	10	11	18	39	32	21	6	3	256
2025	8	23	31	51	30	16	14	12	16	25	44	28	17	6	320
2026	7	23	31	43	68	32	18	17	19	24	28	38	22	15	386

Table 23 – Bedlington Partnership: SEMH Forecast September 2022-September 2026

BEDLINGTON PARTNERSHIP															
Final Forecasts															
Year Group	R	1	2	3	4	5	6	7	8	9	10	11	12	13	NOR Totals
2022	3	4	6	11	18	17	24	18	25	9	20	22	10	8	195
2023	3	3	5	7	14	21	17	24	17	25	8	22	15	6	187
2024	3	4	4	6	9	16	21	17	22	17	23	9	15	10	176
2025	3	4	6	6	8	10	15	20	16	22	15	26	6	10	168
2026	3	4	6	7	7	9	10	15	19	16	20	17	17	4	155

Table 24 – Bedlington Partnerships: Data and information received from SENCos Autumn 2021

Bedlington Partnership	
Children in reception with EHCP	6
Reception children needing a Y7 place in Special School	Under 5
Children in Y4 with EHCP	Under 5
Y4 children needing a Y7 place in Special School	Under 5
Children in Y5 with EHCP	10
Y5 children needing a Y7 place in Special School	7
Y5 children COSA applications	14
Children in Y6 with EHCP	5
Y6 children needing a Y7 place in Special School	Under 5
Y6 children COSA applications	Under 5



Commentary

With a capacity of 187, Cleaswell Hill Special School is already the largest specialist provision in Northumberland. Given the significant increase in pupils being diagnosed with ASD in Bedlington over the forecast period ([see Table 22](#)), additional provision will be needed to serve this partnership area. While expansion of Cleaswell Hill could provide part of the solution to increasing provision in this partnership area, the number of students already on roll will need to be borne in mind to ensure the educational experience of those students is not impacted negatively.

Many of the secondary-age students living in the Bedlington area with SEMH and/or ASD attend the Emily Wilding Davison school, while the Gilbert Ward Academy will open in Blyth in September 2023 and will provide 80 places for secondary provision for SEMH and ASD needs serving the South East locality area.

As highlighted under the Ashington and NCEA Partnerships, Bedlington is one of the 5 partnerships in the South East Locality in close proximity to the A189 corridor and will be included in the overall solution for additional provision in this area. As for the Ashington and NCEA Partnerships, solutions to address the growing needs of children and young people living in the Bedlington area will be discussed with the schools and academies in the partnership as part of the roll-out of the '3-point' assessment programme at an early point in the timetable.

Berwick Partnership

Current Provision

Provision	Age range	Needs met	Capacity	Number on Roll Jan 22 Census
The Grove, Berwick	2-19	ASD; MSI; SLD; PMLD; MLD; PD; SLCN; SPLD	48	48

SEN Forecasts

Table 25 – Berwick Partnership: ASD Forecast September 2022-September 2026

BERWICK PARTNERSHIP															
Final Forecasts															
Year Group	R	1	2	3	4	5	6	7	8	9	10	11	12	13	NOR Totals
2022	1	1	4	1	6	6	8	4	16	5	9	3	6	2	71
2023	3	2	1	6	2	7	8	7	8	15	7	8	2	6	81
2024	3	4	2	2	7	2	9	7	15	8	22	6	6	2	95
2025	3	4	4	2	2	8	2	8	15	15	11	20	5	6	106
2026	2	4	4	5	3	2	10	2	18	15	22	10	15	5	118

Table 26 – Berwick Partnership: SEMH Forecast September 2022-September 2026

BERWICK PARTNERSHIP															
Final Forecasts															
Year Group	R	1	2	3	4	5	6	7	8	9	10	11	12	13	NOR Totals
2022	0	3	2	9	16	18	8	13	8	9	13	7	4	2	111
2023	0	0	5	3	11	20	15	10	12	9	9	10	3	3	108
2024	0	0	0	8	4	14	16	17	9	13	9	6	4	2	102
2025	0	0	0	1	9	4	11	19	16	10	13	7	3	3	95
2026	1	0	0	0	1	11	4	13	18	17	10	10	3	2	89

Table 27 – Berwick Partnership: Data and information received from SENCOs Autumn 2021

Berwick Partnership	
Children in reception with EHCP	9
Reception children needing a Y7 place in Special School	6
Children in Y4 with EHCP	6
Y4 children needing a Y7 place in Special School	Under 5
Children in Y5 with EHCP	Under 5
Y5 children needing a Y7 place in Special School	0
Y5 children COSA applications	0
Children in Y6 with EHCP	6
Y6 children needing a Y7 place in Special School	Under 5
Y6 children COSA applications	5

Commentary

The Council has allocated funding for the rebuilding/refurbishment of school buildings in the Berwick Partnership in its Medium-Term Plan. However, before embarking on this buildings programme, the Council is undertaking Phase 1 consultation with schools, parents and the wider public on whether the structure of the Berwick Partnership should remain as a 3-tier system or whether it should be reorganised as a 2-tier (primary/secondary) system. Phase 2 consultation if approved would include specific proposals for individual schools.

As part of this process, the opportunity has been taken to have a 'joined-up' approach and to review the current extent of the specialist provision within the Berwick Partnership area against the forecasted need for provision. The Grove Special School is the only specialist provision in the partnership area with a capacity of 46, but Tables 25 and 26 indicates that there is need for additional specialist provision in this part of the county.

A workshop was held with the headteachers of all schools in the Berwick Partnership and The Grove Special school during Phase 1 consultation to review the data in Tables 25 and 26 to discuss how and where additional specialist provision could be provided in the partnership. The initial proposals arising from this workshop suggest additional provision could be developed on site within schools in the partnership at the primary and secondary phase. The views of SEND parent/carer forums in the Berwick/North Northumberland area on these initial proposals will also be sought in order to shape and refine any proposals brought forward in Phase 2 consultation.



Blyth and Bede Partnerships

Current Provision

Together the Blyth Partnership and the Bede Partnership serve the conurbation of Blyth.

Provision	Age range	Needs met	Capacity	Number on Roll Jan 22 Census
The Dales (Blythdale siteC), Blyth	4-11	ASD; HI; MLD; OTH; PD; SEMH; SLCN; SLD; SPLD	115	117
The Gilbert Ward Academy, Blyth (free school - opens September 2023)	11-16	SEMh; ASD	80	N/A

SEN Forecasts

Table 28 – Bede Partnership: ASD Forecast September 2022-September 2026

BEDE PARTNERSHIP															
Final Forecasts															
Year Group	R	1	2	3	4	5	6	7	8	9	10	11	12	13	NOR Totals
2022	0	0	5	7	4	4	6	6	2	10	4	8	3	3	61
2023	1	2	2	7	10	5	6	7	6	2	12	3	5	2	67
2024	1	1	0	0	9	11	7	7	7	7	3	12	2	5	73
2025	1	1	2	2	0	0	15	19	8	9	10	8	2	7	75
2026	1	1	2	2	0	0	15	19	8	9	10	8	2	7	84

Table 29 – Blyth Partnership: ASD Forecast September 2022-September 2026

BLYTH PARTNERSHIP															
Final Forecasts															
Year Group	R	1	2	3	4	5	6	7	8	9	10	11	12	13	NOR Totals
2022	8	6	4	11	7	3	12	6	13	11	10	13	7	4	115
2023	6	9	9	7	13	8	4	12	8	17	12	11	11	7	133
2024	6	7	13	14	8	15	10	4	15	10	19	13	9	11	155
2025	6	7	10	21	16	9	17	10	5	20	12	21	11	9	175
2026	6	7	10	16	25	19	11	17	12	7	22	13	18	11	195



Table 30 – Bede Partnership: SEMH Forecast September 2022-September 2026

BEDE PARTNERSHIP															
Final Forecasts															
Year Group	R	1	2	3	4	5	6	7	8	9	10	11	12	13	NOR Totals
2022	0	1	4	4	2	9	11	15	15	8	7	4	3	12	96
2023	0	0	2	5	6	2	10	10	19	15	6	6	2	5	89
2024	0	0	1	2	8	7	2	9	12	20	11	5	4	3	84
2025	0	0	1	1	4	9	7	2	11	13	14	10	3	5	81
2026	0	0	1	1	1	4	10	7	2	12	9	13	6	5	71

Table 31 – Blyth Partnership: SEMH Forecast September 2022-September 2026

BLYTH PARTNERSHIP															
Final Forecasts															
Year Group	R	1	2	3	4	5	6	7	8	9	10	11	12	13	NOR Totals
2022	3	5	14	10	4	8	25	28	13	15	5	18	12	10	167
2023	4	4	6	13	9	4	8	29	31	11	15	5	10	10	160
2024	4	6	6	6	12	10	4	10	32	25	11	15	3	9	152
2025	4	6	8	6	6	13	11	5	11	25	25	10	9	2	141
2026	3	6	8	8	5	6	15	13	6	9	25	24	6	8	141

Table 32 – Bede and Blyth Partnerships: Data and information received from SENCOs Autumn 2021

Bede and Blyth Partnerships	
Children in reception with EHCP	Under 5
Reception children needing a Y7 place in Special School	Under 5
Children in Y4 with EHCP	11
Y4 children needing a Y7 place in Special School	6
Children in Y5 with EHCP	14
Y5 children needing a Y7 place in Special School	6
Y5 children COSA applications	11
Children in Y6 with EHCP	20
Y6 children needing a Y7 place in Special School	7
Y6 children COSA applications	5

Commentary

Tables 28 and 29 indicate that the ASD is the primary need increasing most in the Blyth area and this growth covers both the primary and secondary years. Tables 30 and 31 indicate that SEMH numbers may decrease over the forecast period in the Blyth area.

Many of the secondary-age students living in the Blyth area with SEMH and/or ASD attend the Emily Wilding Davison school, while the Gilbert Ward Academy will open in Blyth in September 2023 and will provide 80 places for secondary provision for SEMH and ASD needs serving the South East locality area.

However, given the forecasted level of growth in the South East locality in general, the Bede and Blyth Partnerships will be included when identifying what and where additional provision is required in this area and discussions with the schools and academies in these partnerships will be programmed to take place at an early point in the timetable as part of the roll-out of the '3-point' assessment programme.



Coquet Partnership

Current Provision

There is no specialist provision currently located within the Coquet Partnership, which means that all students residing within the partnership who need to attend a special school must travel out of catchment and in some cases, out of county for their education.

Provision	Age range	Needs met	Capacity	Number on Roll Jan 22 Census
Barndale Special School satellite provision at Amble (under consultation)	2-19	ASD; SEMH	tbc	N/A

SEN Forecasts

Table 33 – Coquet Partnership: ASD Forecast September 2022-September 2026

COQUET PARTNERSHIP															
Final Forecasts															
Year Group	R	1	2	3	4	5	6	7	8	9	10	11	12	13	NOR Totals
2022	1	2	4	13	3	9	3	8	4	4	7	7	1	4	68
2023	1	1	2	9	12	5	12	3	6	5	4	8	5	1	76
2024	1	1	2	5	9	22	7	15	3	9	6	4	7	5	94
2025	1	1	2	3	5	16	29	9	12	4	9	6	4	6	106
2026	1	1	2	4	3	8	21	38	7	17	4	10	5	3	123

Table 34 – Coquet Partnership: SEMH Forecast September 2022-September 2026

COQUET PARTNERSHIP															
Final Forecasts															
Year Group	R	1	2	3	4	5	6	7	8	9	10	11	12	13	NOR Totals
2022	3	5	8	10	7	8	8	9	9	8	5	7	3	5	95
2023	3	7	8	8	14	6	7	10	10	8	8	5	4	3	100
2024	3	8	11	9	11	11	5	8	10	8	9	8	3	3	107
2025	3	8	12	11	11	9	11	6	9	9	9	8	4	3	113
2026	3	8	12	13	15	10	9	12	6	7	9	8	5	4	121

Table 35 – Coquet Partnership: Data and information received from SENCOs Autumn 2021

Coquet Partnerships	
Children in reception with EHCP	0
Reception children needing a Y7 place in Special School	0
Children in Y4 with EHCP	Under 5
Y4 children needing a Y7 place in Special School	Under 5
Children in Y5 with EHCP	Under 5
Y5 children needing a Y7 place in Special School	Under 5
Y5 children COSA applications	Under 5
Children in Y6 with EHCP	0
Y6 children needing a Y7 place in Special School	0
Y6 children COSA applications	Under 5

Commentary

Consultation is currently taking place on proposals for the reorganisation of the mainstream schools in the partnership to a primary/secondary structure. As part of this process, the opportunity has been taken to have a 'joined-up' approach and to review whether there is a need for specialist provision to be located within the Coquet Partnership. Officers organised a workshop with the Coquet schools headteachers, supported by the head of Barndale Special School to review the current number of students leaving the partnership every day and to consider the initial forecasts for ASD and SEMH needs in the area.

A proposal emerged with the support of all headteachers in the Coquet Partnership for a satellite of Barndale Special School to be established as a stand-alone provision within the current South Avenue building of James Calvert Spence College (JCSC) in Amble. Under the proposal, this satellite provision would share the South Avenue building either with JCSC if the current organisation of schools remains in place or with Amble First School, as put forward as part of the primary/secondary proposals.



Cramlington Partnership

Current Provision

Provision	Age range	Needs met	Capacity	Number on Roll Jan 22 Census
Hillcrest Special School, Cramlington	11-18	AS; SEMH; HI; SLCN; SLD; SPLD; MLD	110	109

SEN Forecasts

Table 36 – Cramlington Partnership: ASD Forecast September 2022-September 2026

CRAMLINGTON PARTNERSHIP															
Final Forecasts															
Year Group	R	1	2	3	4	5	6	7	8	9	10	11	12	13	NOR Totals
2022	5	4	4	12	7	7	4	6	13	11	12	6	9	6	106
2023	4	5	5	7	14	14	8	5	8	14	14	14	5	9	125
2024	4	4	6	9	8	26	15	9	6	9	18	17	13	5	150
2025	4	4	4	12	11	15	30	16	11	7	12	21	16	13	175
2026	4	4	4	9	14	21	17	31	20	12	9	13	20	16	195

Table 37 – Cramlington Partnership: SEMH Forecast September 2022-September 2026

CRAMLINGTON PARTNERSHIP															
Final Forecasts															
Year Group	R	1	2	3	4	5	6	7	8	9	10	11	12	13	NOR Totals
2022	11	13	10	8	12	14	21	15	23	12	13	17	7	6	184
2023	9	16	17	11	9	13	16	21	16	26	12	13	10	5	193
2024	9	13	21	18	12	10	14	16	21	17	25	11	8	9	202
2025	9	13	16	22	20	12	10	14	16	24	16	24	7	6	209
2026	9	13	16	17	24	20	13	11	14	18	23	16	14	6	214

Table 38 – Cramlington Partnership: Data and information received from SENCOs Autumn 2021

Cramlington Partnership	
Children in reception with EHCP	Under 5
Reception children needing a Y7 place in Special School	Under 5
Children in Y4 with EHCP	5
Y4 children needing a Y7 place in Special School	Under 5
Children in Y5 with EHCP	11
Y5 children needing a Y7 place in Special School	Under 5
Y5 children COSA applications	6
Children in Y6 with EHCP	7
Y6 children needing a Y7 place in Special School	6
Y6 children COSA applications	9



Commentary

Table 36 indicates that an increasing and significant number of students in the Cramlington Partnership will be diagnosed with ASD over the forecast period, while Table 37 suggests SEMH numbers are forecast to increase at a steady but lower rate.

Many of the secondary-age students living in the Cramlington area with SEMH and/or ASD attend the Emily Wilding Davison school, while the Gilbert Ward Academy will open in Blyth in September 2023 and will provide 80 places for secondary provision for SEMH and ASD needs serving the South East locality area.

However, given the forecasted level of growth in the South East locality in general, the Cramlington Partnership will be included when identifying whether additional provision is required in this area and discussions with the schools and academies in these partnerships will be programmed to take place at an early point in the timetable as part of the roll-out of the '3-point' assessment programme.

Haydon Bridge Partnership

Current Provision

There is currently no specialist provision located within the Haydon Bridge Partnership area, the nearest specialist provision in the county being Hexham Priory School.

SEN Forecasts

Table 39 – Haydon Bridge Partnership: ASD Forecast September 2022-September 2026

HAYDON BRIDGE PARTNERSHIP															
Final Forecasts															
Year Group	R	1	2	3	4	5	6	7	8	9	10	11	12	13	NOR Totals
2022	4	3	5	1	3	6	5	6	7	4	5	5	1	3	16
2023	2	4	6	6	1	3	9	6	6	6	5	5	4	1	18
2024	2	2	7	6	6	1	5	10	6	5	8	5	4	4	23
2025	2	2	4	7	7	6	2	6	11	5	6	7	4	4	22
2026	3	2	4	4	8	6	10	2	6	9	6	6	6	4	21

Table 40 – Haydon Bridge Partnership: SEMH Forecast September 2022-September 2026

HAYDON BRIDGE PARTNERSHIP															
Final Forecasts															
Year Group	R	1	2	3	4	5	6	7	8	9	10	11	12	13	NOR Totals
2022	5	5	6	7	9	14	5	10	11	6	6	3	2	3	94
2023	3	6	14	7	7	18	18	7	13	10	7	6	2	2	119
2024	3	4	18	16	7	15	23	24	8	11	11	6	3	1	151
2025	3	4	12	21	17	15	19	29	29	7	12	9	3	24	4
2026	4	4	12	13	22	35	19	25	36	26	8	10	5	3	223

Table 41 – Haydon Bridge Partnership: Data and information received from SENCos Autumn 2021

Haydon Bridge Partnership	
Children in reception with EHCP	Under 5
Reception children needing a Y7 place in Special School	Under 5
Children in Y4 with EHCP	8
Y4 children needing a Y7 place in Special School	Under 5
Children in Y5 with EHCP	Under 5
Y5 children needing a Y7 place in Special School	Under 5
Y5 children COSA applications	Under 5
Children in Y6 with EHCP	7
Y6 children needing a Y7 place in Special School	Under 5
Y6 children COSA applications	0



Commentary

Table 39 indicates a fairly low level of predicted growth of students diagnosed with ASD over the forecast period; however Table 40 predicts a significant increase in students diagnosed with SEMH over the same period.

Haydon Bridge Partnership is the county's most westerly partnership, with the nearest specialist provision being Hexham Priory School. In relation to identifying viable solutions for pupils with varying SEND needs living in the west of the county, it is proposed that (as for the South East of the County), provision in the partnerships of Haydon Bridge, Hexham, Prudhoe and Ponteland is considered as part of a wider solution for the West locality when identifying solutions as part of the roll-out of the 3-point programme.

This could include the development of an Alternative Provision possibly located at Haydon Bridge High School. Furthermore, the Emily Wilding Davison School, now located in Ponteland, has increased its planned pupil numbers as well as becoming co-educational and therefore now provides specialist SEMH provision within a reasonable distance of the partnerships in the west of the county.

Hexham Partnership

Current Provision

Provision	Age range	Needs met	Capacity	Number on Roll Jan 22 Census
Hexham Priory School (academy)	2-19	ASD; MSI; SLD; PMLD; MLD; PD; SLCN; SPLD; SEMH; OTH; VI	112	120

SEN Forecasts

Table 42 – Hexham Partnership: ASD Forecast September 2022-September 2026

HEXHAM PARTNERSHIP															
Final Forecasts															
Year Group	R	1	2	3	4	5	6	7	8	9	10	11	12	13	NOR Totals
2022	2	2	5	3	9	4	2	3	9	6	8	3	8	2	67
2023	2	3	3	5	6	11	5	3	6	9	7	8	3	7	77
2024	2	3	4	4	9	7	14	5	5	6	10	7	7	2	85
2025	2	3	4	4	7	11	9	14	9	5	6	11	6	6	98
2026	2	3	4	4	8	8	14	10	26	9	5	7	9	5	114

Table 43 – Hexham Partnership: SEMH Forecast September 2022-September 2026

HEXHAM PARTNERSHIP															
Final Forecasts															
Year Group	R	1	2	3	4	5	6	7	8	9	10	11	12	13	NOR Totals
2022	1	2	7	13	4	11	6	13	8	8	7	5	1	2	87
2023	1	2	2	16	11	6	10	6	17	7	7	6	4	0	96
2024	1	2	2	5	14	15	6	12	8	16	6	6	4	2	100
2025	1	2	3	5	5	19	15	6	15	8	14	5	4	2	105
2026	1	2	3	7	5	6	18	16	8	14	7	12	4	2	106

Table 44 – Hexham Partnership: Data and information received from SENCos Autumn 2021

Hexham Partnership	
Children in reception with EHCP	2
Reception children needing a Y7 place in Special School	2
Children in Y4 with EHCP	3
Y4 children needing a Y7 place in Special School	1
Children in Y5 with EHCP	3
Y5 children needing a Y7 place in Special School	1
Y5 children COSA applications	4
Children in Y6 with EHCP	7
Y6 children needing a Y7 place in Special School	0
Y6 children COSA applications	0

Commentary

In common with the majority of the partnerships in the county, Tables 42 and 43 indicate that the number of students diagnosed with ASD and SEMH as a primary need are forecast to increase in the primary and secondary phases, although not as significantly as in some partnerships.

As stated previously, it is proposed that provision in the Hexham Partnership is considered with Haydon Bridge, Prudhoe and Ponteland as part of a wider solution for the West locality when identifying solutions as part of the roll-out of the 3-point programme.



Morpeth Partnership

Current Provision

Provision	Age range	Needs met	Capacity	Number on Roll Jan 22 Census
Collingwood School and Media Arts College, Morpeth	2-19	ASD; SLD; MLD; PD; SLCN; SPLD; SEMH	232	260

SEN Forecasts

Table 45 – Morpeth Partnership: ASD Forecast September 2022-September 2026

MORPETH PARTNERSHIP															
Final Forecasts															
Year Group	R	1	2	3	4	5	6	7	8	9	10	11	12	13	NOR Totals
2022	6	7	7	6	12	18	5	5	11	7	3	6	4	4	100
2023	4	9	10	10	7	31	16	7	7	15	6	3	6	4	134
2024	4	6	12	14	12	17	28	25	11	10	13	6	2	6	167
2025	4	6	8	17	17	30	16	42	39	15	9	14	6	3	225
2026	5	6	8	11	20	44	27	24	66	55	13	9	13	6	306

Table 46 – Morpeth Partnership: SEMH Forecast September 2022-September 2026

MORPETH PARTNERSHIP															
Final Forecasts															
Year Group	R	1	2	3	4	5	6	7	8	9	10	11	12	13	NOR Totals
2022	3	5	7	12	9	14	16	8	15	12	12	4	4	3	125
2023	4	6	6	13	16	10	19	16	9	12	15	10	3	6	143
2024	4	6	7	10	16	16	13	18	19	7	14	13	6	4	155
2025	4	6	8	12	13	17	23	13	21	15	9	13	8	8	169
2026	4	6	8	13	15	14	24	22	15	17	18	8	7	10	182

Table 47 – Morpeth Partnership: Data and information received from SENCos Autumn 2021

Morpeth Partnership	
Children in reception with EHCP	4
Reception children needing a Y7 place in Special School	1
Children in Y4 with EHCP	5
Y4 children needing a Y7 place in Special School	3
Children in Y5 with EHCP	7
Y5 children needing a Y7 place in Special School	5
Y5 children COSA applications	8
Children in Y6 with EHCP	6
Y6 children needing a Y7 place in Special School	2
Y6 children COSA applications	4

Commentary

In common with the majority of partnerships in the county, Table 45 suggests that there will be a significant increase in the number of students being diagnosed with ASD living in the partnership over the forecast period. Table 46 predicts that SEMH will also increase steadily but at a lower rate.

Collingwood School and Media Arts College is located within the Morpeth Partnership and in common with all other special schools in the county, it has seen a significant rise in pupil numbers and is now at capacity for September 2022.

Consideration as to whether additional provision will be needed within the Morpeth Partnership will be addressed as part of the roll-out of the 3-point programme and in the light of proposed solutions for additional provision in neighbouring partnerships, particularly those in the South East of the county.



Ponteland Partnership

Current Provision

The Emily Wilding Davison School moved to its new location in Ponteland from Seghill in September 2022. From this date, the school has also increased its capacity to 100 planned places and has become a co-educational provision, with girls being enrolled from this date. There was no specialist provision within Ponteland Partnership prior to the school's relocation.

Provision	Age range	Needs met	Capacity	Number on Roll Jan 22 Census
Emily Wilding Davison School, Ponteland	11-16	ASD; SEMH; MLD; SPLD	100	75

SEN Forecasts

Table 48 – Ponteland Partnership: ASD Forecast September 2022-September 2026

PONTELAND PARTNERSHIP															
Final Forecasts															
Year Group	R	1	2	3	4	5	6	7	8	9	10	11	12	13	NOR Totals
2022	0	0	0	0	0	1	4	2	1	0	1	4	4	1	18
2023	0	0	0	0	0	0	1	2	1	1	0	1	3	2	12
2024	0	0	0	0	0	0	0	1	1	1	1	0	1	1	7
2025	0	0	0	0	0	0	0	0	0	1	1	1	0	0	5
2026	0	0	0	0	0	0	0	0	0	0	1	1	1	0	4

Table 49 – Ponteland Partnership: SEMH Forecast September 2022-September 2026

PONTELAND PARTNERSHIP															
Final Forecasts															
Year Group	R	1	2	3	4	5	6	7	8	9	10	11	12	13	NOR Totals
2022	0	0	0	1	3	0	2	3	1	1	1	2	1	1	15
2023	0	0	0	0	1	1	0	1	2	1	1	1	1	0	9
2024	0	0	0	0	0	0	3	0	1	2	0	0	1	1	8
2025	0	0	0	0	0	0	1	1	0	1	1	0	0	0	5
2026	0	0	0	0	0	0	0	0	1	0	0	1	0	0	3

Table 41 – Haydon Bridge Partnership: Data and information received from SENCos Autumn 2021

Ponteland Partnership	
Children in reception with EHCP	5
Reception children needing a Y7 place in Special School	4
Children in Y4 with EHCP	4
Y4 children needing a Y7 place in Special School	1
Children in Y5 with EHCP	4
Y5 children needing a Y7 place in Special School	1
Y5 children COSA applications	2
Children in Y6 with EHCP	8
Y6 children needing a Y7 place in Special School	2
Y6 children COSA applications	4



Commentary

Tables 48 and 49 suggest that Ponteland Partnership will buck the trend in relation to the rest of the county within the forecast period and that the number of pupils diagnosed with ASD and SEMH needs will actually fall.

In any event, the Emily Wilding Davison School, now located in Ponteland, has increased its planned pupil numbers as well as becoming co-educational and therefore now provides specialist SEMH provision within the partnership. While the majority of its current cohort of pupils reside in the South East of the county, it is expected that overtime the majority of its pupils will in fact access the provision from the west the county, with pupils in the South East being able to access provision from the existing provision there and from the Gilbert Ward Academy when it opens in September 2023.

Prudhoe Partnership

Current Provision

There is currently no specialist provision located within the Prudhoe Partnership area.

SEN Forecasts

Table 51 – Prudhoe Partnership: ASD Forecast September 2022-September 2026

PRUDHOE PARTNERSHIP															
Final Forecasts															
Year Group	R	1	2	3	4	5	6	7	8	9	10	11	12	13	NOR Totals
2022	4	4	7	9	5	9	2	10	2	10	6	4	4	1	76
2023	5	5	5	10	10	6	8	2	10	3	9	6	3	1	84
2024	5	6	6	7	12	13	6	9	2	14	3	9	5	1	98
2025	5	6	7	9	8	15	12	6	10	3	13	3	8	2	107
2026	4	6	7	11	11	10	14	14	7	13	3	14	2	3	119

Table 52 – Prudhoe Partnership: SEMH Forecast September 2022-September 2026

PRUDHOE PARTNERSHIP															
Final Forecasts															
Year Group	R	1	2	3	4	5	6	7	8	9	10	11	12	13	NOR Totals
2022	4	4	4	2	2	5	6	8	3	11	7	1	4	3	65
2023	4	4	5	3	2	2	7	5	9	3	10	5	1	4	65
2024	4	4	6	4	3	2	3	7	6	9	3	7	4	1	61
2025	4	4	5	4	4	3	3	3	7	6	8	2	5	4	61
2026	4	4	5	4	4	4	4	3	3	7	5	6	1	5	58

Table 53 – Prudhoe Partnership: Data and information received from SENCos Autumn 2021

Prudhoe Partnership	
Children in reception with EHCP	Under 5
Reception children needing a Y7 place in Special School	Under 5
Children in Y4 with EHCP	5
Y4 children needing a Y7 place in Special School	Under 5
Children in Y5 with EHCP	7
Y5 children needing a Y7 place in Special School	Under 5
Y5 children COSA applications	Under 5
Children in Y6 with EHCP	Under 5
Y6 children needing a Y7 place in Special School	0
Y6 children COSA applications	Under 5

Commentary

Table 51 suggests that the number of students diagnosed with ASD as a primary need and who live in the Prudhoe Partnership is set to increase in both the primary and secondary phases, although not as significantly as in some partnerships. The partnership bucks the trend in relation to the majority of other partnerships in the county, with the number of pupils diagnosed with SEMH predicted to fall, albeit not very significantly.

It is proposed that provision in the Prudhoe Partnership is considered with Haydon Bridge, Hexham and Ponteland as part of a wider solution for the West locality when identifying solutions as part of the roll-out of the 3-point programme.



Seaton Valley Partnership

Current Provision

Provision	Age range	Needs met	Capacity	Number on Roll Jan 22 Census
Additional resourced provision, Seaton Sluice First School, Seaton Sluice	4-9		12	N/A
Additional resourced provision, Whytrig Middle School/Astley High School	9-18		10	

SEN Forecasts

Table 54 – Seaton Valley Partnership: ASD Forecast September 2022-September 2026

SEATON VALLEY PARTNERSHIP															
Final Forecasts															
Year Group	R	1	2	3	4	5	6	7	8	9	10	11	12	13	NOR Totals
2022	0	0	1	0	0	0	0	1	1	1	0	0	0	0	3
2023	0	0	0	0	0	0	0	0	0	0	0	0	0	0	1
2024	0	0	0	0	0	0	0	0	0	0	0	0	0	0	0
2025	0	0	0	0	0	0	0	0	0	0	0	0	0	0	0
2026	0	0	0	0	0	0	0	0	0	0	0	0	0	0	0

Table 55 – Seaton Valley Partnership: SEMH Forecast September 2022-September 2026

SEATON VALLEY PARTNERSHIP															
Final Forecasts															
Year Group	R	1	2	3	4	5	6	7	8	9	10	11	12	13	NOR Totals
2022	0	0	0	0	0	0	0	0	1	0	0	0	0	0	1
2023	0	0	0	0	0	0	0	0	0	0	0	0	0	0	0
2024	0	0	0	0	0	0	0	0	0	0	0	0	0	0	0
2025	0	0	0	0	0	0	0	0	0	0	0	0	0	0	0
2026	0	0	0	0	0	0	0	0	0	0	0	0	0	0	0

Table 56 – Seaton Valley Partnership: Data and information received from SENCOs Autumn 2021

Seaton Valley Partnership	
Children in reception with EHCP	6
Reception children needing a Y7 place in Special School	Under 5
Children in Y4 with EHCP	6
Y4 children needing a Y7 place in Special School	Under 5
Children in Y5 with EHCP	Under 5
Y5 children needing a Y7 place in Special School	Under 5
Y5 children COSA applications	Under 5
Children in Y6 with EHCP	9
Y6 children needing a Y7 place in Special School	Under 5
Y6 children COSA applications	Under 5

Commentary

Tables 54 and 55 indicate that there is very little predicted need for provision for students with ASD and SEMH. Given its location in the South East of the county, it is expected that any additional provision established in the South East locality would address any need arising from the Seaton Valley Partnership.





Section 5

Ideas/models to increase Specialist School Capacity

The data presented for each school partnership demonstrates there is a growing demand to increase specialist capacity across Northumberland with high level data suggesting that there could be a further 700 special school places required by 2026 if the current pattern of increased demand continues.

The table below suggests how this increased demand could be met across Northumberland. The ideas and models are suggestions and each of these options would be discussed with each partnership of schools and relevant special school.

Partnership	Potential Model	Funding option	Approximate funding level	Timetable completion	Timetable Consultation
NORTH					
Alnwick	New build Barndale	SCIP; capital receipts; S106; Council Funding; Basic need	£8m to £12m	September 2025	March – September 2024
Berwick	Expand Grove to meet needs of pupils with SEMH and ASD, in new buildings on a new site	Berwick capital funding	£8m to £12m	September 2026	May 2022 – June 2023
Coquet	Barndale@Amble 50 place ASD SEMH all age provision in the refurbished middle school building.	Coquet capital and DfE SEND specialist place funding.	£4m to £6m	September 2024	May – November 2022
SOUTH EAST/CENTRAL					
Ashington/Hirst	Increased use of independent specialist provision to meet demand for primary places. Growth at NCEA Castle to reduce out of county placements e.g. Northern Counties/Percy Hedley	High Needs block commissioned places. Expansion on existing sites	£2m to £3m	September 2027	March – September 2026

Partnership	Potential Model	Funding option	Approximate funding level	Timetable completion	Timetable Consultation
SOUTH EAST/CENTRAL (CONTINUED)					
Blyth	Free school open 2023. Specialist mainstream based provision	DfE	£1.1m	September 2023	Complete March – September 2024
Bedlington	Expand Cleaswell Hill to meet the needs of ASD students on former Guidepost Middle School land	SCIP; capital receipts; S106; Council Funding; Basic need	£2m to £3m	September 2024	March – September 2023
Cramlington	Hillcrest to become all age provision on current site	DfE bid or SCIP; capital receipts; S106; Council Funding; Basic need	£8m to £12m	September 2025	March – September 2024
Morpeth	Temporary expansion to Hepscoth Park for primary age	School funded-temporary model	None	December 2022	March-September 2023
Seaton Valley	ARP part of Astley new school build. Number of places and admission criteria need further development. Primary specialist provision and secondary specialist provision		None as part of the main Astley/ Whytrig scheme	Complete – subject to review	Complete – subject to review
PRU	Relocate PRU to Seghill and change age range to KS3 and KS4, and expand to include some medium term placements. Mix of permanent and assessment places.	Former Atkinson House building	None	October 2022	N/A
WEST					
Haydon Bridge	Primary SEMH (Lodge HB)	SCIP; capital receipts; S106; Council Funding; Basic need	£500k to £750k	September 2027	March – September 2026
Hexham	Expand on existing site using Dene Park House building	Capital receipts; S106; Council Funding; Basic need	£500k to £750k	September 2024	March – September 2023

Partnership	Potential Model	Funding option	Approximate funding level	Timetable completion	Timetable Consultation
WEST (CONTINUED)					
Ponteland	Relocation of Emily Wilding Davison schools to create additional places planned to be open Sept 2022. Phase 2 works to co-locate services and expand the vocational offer	Additional funding would be required to carry out phase 2 works.	£5.5m	School - September 2022 Co-located services – September 2023	Complete
Prudhoe	No specific need identified – watching brief.			N/A	N/A

Consultation and refining and developing options for Capacity Growth at a Local level

As set out in [Section 3](#), one part of the 3-part methodology for identifying the need for SEND capacity across the county is through the development of proposed solutions in collaboration with school partnerships, the outcomes of which will be consulted on with parents and the wider community.

In line with the timetable set out in [Section 5](#), workshops will be organised with headteachers of mainstream schools and academies and headteachers of special schools and academies – other relevant parties may also be invited to collaborate where there are specific areas to address within a partnership. Relevant and up to date data and information will be shared with partners, and it is envisaged that local information from partners working on the ground can also be shared in order to assist in forming solutions.

While potential solutions have been set out at [Section 5](#), these are a starting point and the purpose of the workshops will be to develop and refine clear, agreed proposals that all partners believe are the right solutions for that specific area of the county. Approval to consult with parents, stakeholders and the wider community will then be sought.



Section 6 Funding

In order to increase specialist capacity across Northumberland a significant amount of funding will be required to meet the predicted growth in places. The initial ideas on how this could be achieved is set out in [Section 5](#). There are a number of grant funding streams that can be utilised to support growth as well as funding already identified as part of the council Medium term financial plan as well as capital contributions from section 106 developer contributions.

NCC Funding

Capital Funding of £17m has already been identified within the council MTFP to grow capacity at a strategic level. An allocation of £1,057,675.30 in 2021/22, was approved by cabinet as the capped contribution to the free school in Blyth. The remaining funding is available to allocate to potential projects identified in [Section 5](#).

Year	Allocation
2022-23	5,942,342
2023-24	10,000,000
Total	15,942,342

DfE Specialist Capacity Growth Funding

In light of the increasing demand for specialist places nationally DfE have been providing local authorities with funding for the expansion of SEND specialist places with Northumberland allocation being as detailed opposite.

Year	Allocation
2021-22	£851,302
2022-23	£1,253,875
2023-24	£2,450,813
Total	£4,555,517

Education Infrastructure Section 106 funding

The Council's Education Infrastructure Contribution Policy was approved for implementation by Cabinet in December 2017. In 2021 the council's Cabinet approved an update to the policy specifically in order to approve an increase in the requested contribution towards SEND provision in the county to reflect the increased number (or reflecting the increased number) of young people in the County requiring specialist provision. The table below shows the current expected level of funding that could be made available to support expansion of special provision as detailed in this strategy.

Locality Area	Value
North (Berwick, Alnwick and Coquet)	£1,637,097
South East/Central (Morpeth, Ashington, NCEA, Blyth, Bede, Bedlington, Cramlington, Seaton Valley)	£1,804,356
West (Haydon Bridge, Hexham, Prudhoe, Ponteland)	£396,000
Total	£3,837,453

Other funding

Current unallocated basic need funding of £5,356,528 has been allocated to Northumberland for 2023/24, for places in September 2023. Whilst this grant is allocated to provide additional school places it isn't ring fenced so could be used to support growth in places in special schools. There could be future opportunities within the lifetime of this strategy to bid for additional central government funding as well as future years grant funding allocations from DfE.

Conclusion

This strategy is the first time Northumberland has brought together the place planning methodology used to plan for mainstream school places to predict the number of specialist places likely to be required over the next 5 years and formulate a strategy on how to engage at a local level to ensure our children and young people can have their needs met as close to their home communities as possible.

The predictions contained within this strategy do not include the potential impact of future interventions or strategies and will therefore be updated on an annual basis in order that information used to plan and grow capacity is reflective of the demands for specialist provision as the impact of interventions and strategies currently being implemented across Northumberland becomes clear.

Capital funding to support growth in places

Funding	Value
NCC Capital	£15,942,324
SEND Specialist Places Grant	£4,555,517
Section 106 funding	£3,837,453
Total	£24,335,294

The data presented for each school partnership demonstrates there is a growing demand to increase specialist capacity across Northumberland with high level data suggesting that there could be a further 700 special school places required by 2026 if the current pattern of increased demand continues. [Section 5](#) sets out ideas on how to achieve additional capacity as well as potential timescales and some very high level costs. All this detail is subject to detailed work within each of the school partnerships to ensure the affordability and sustainability of any plans for growth.

Contact Us

Northumberland County Council,
County Hall,
Morpeth
NE61 2EF

Website www.northumberland.gov.uk